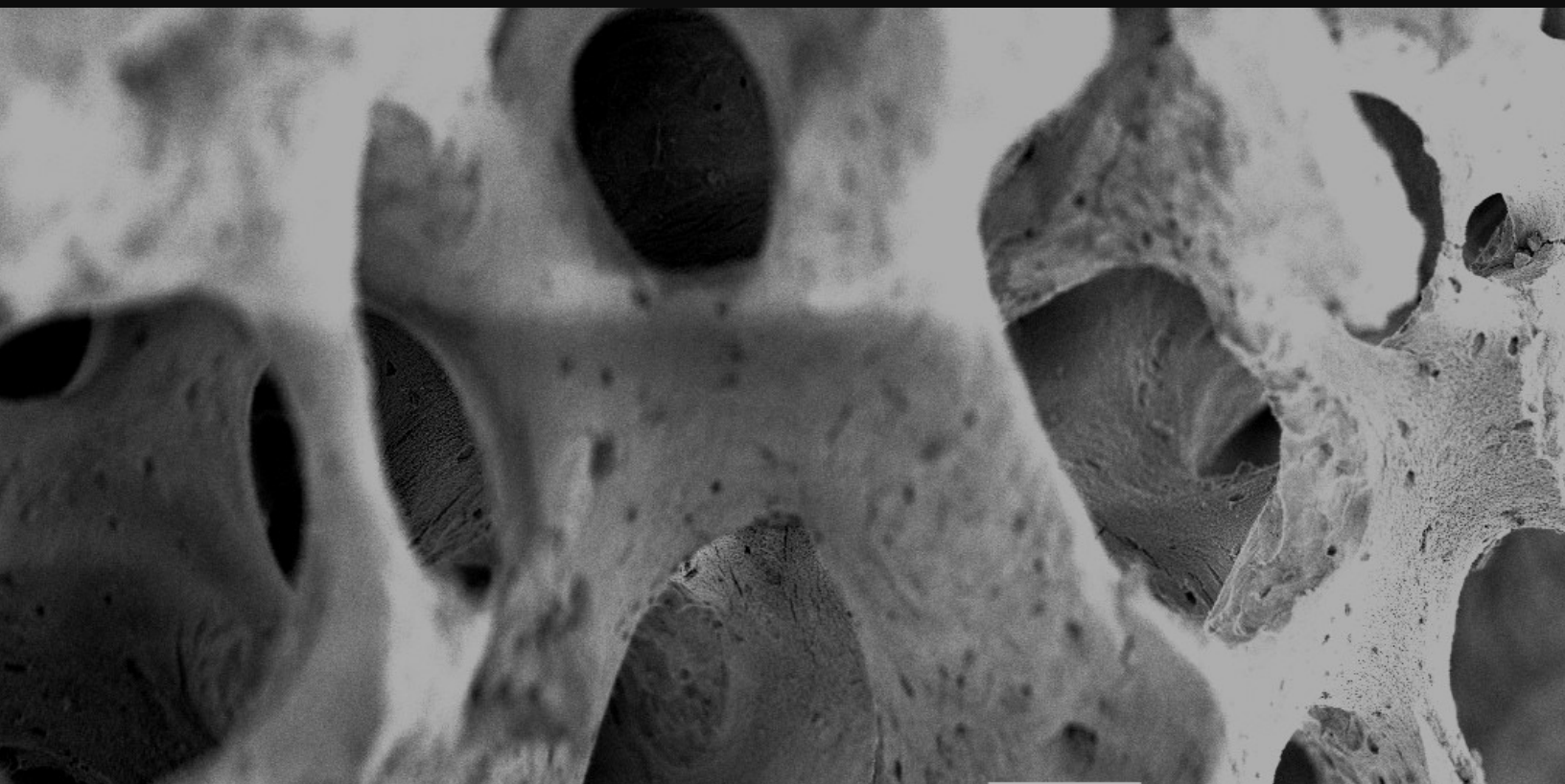




NOVATEND

LEADERS IN TISSUE ENGINEERING

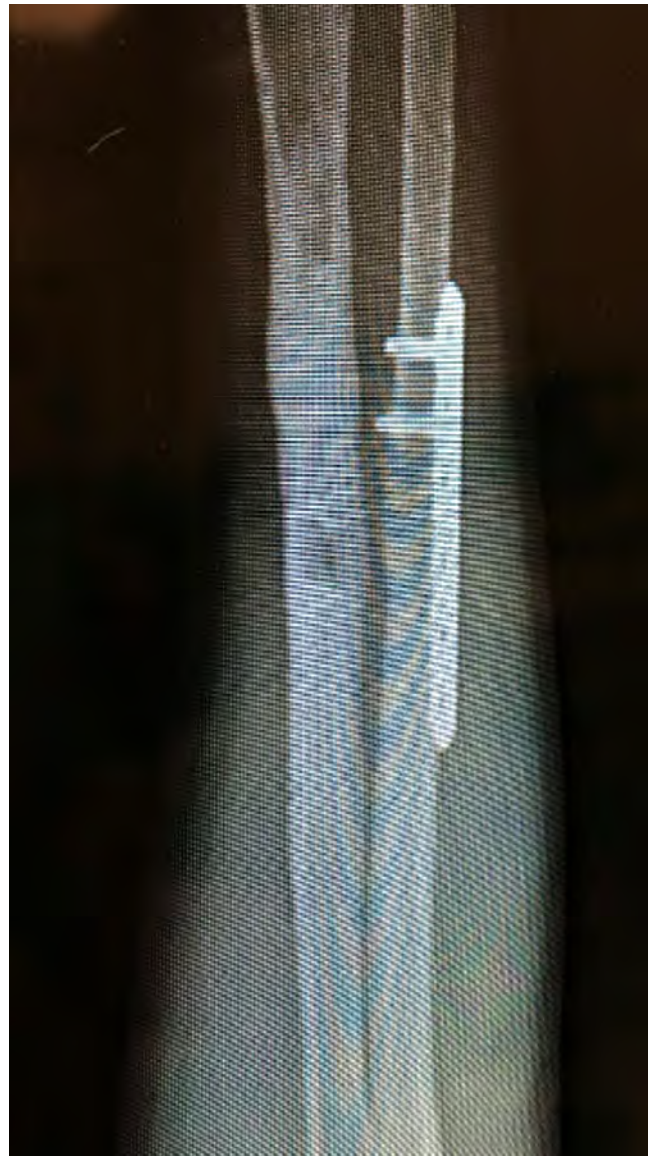
ORTHOPAEDIC/NEUROSURGERY CATALOG 2025





NOVATEND

LEADERS IN TISSUE ENGINEERING



X-rays comparing a non-union 1 year post revision after GSW and 3 months after treatment with injectable DBM-BMP complex





CATALOGUE 2025

NovaDBMX DBM-BMP

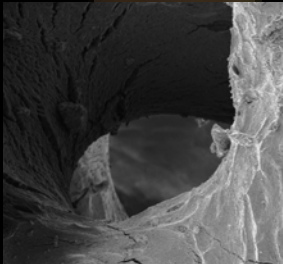


CAT NO: **PRICE (Incl. VAT)**

- NovaDBMX2cc R7198.80
- NovaDBMX5cc R13804.29



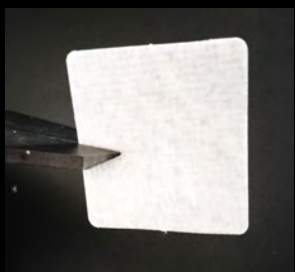
NovaGROW DBM GRANULES



- NovaGROW1.2g R941.00
- NovaGROW3g R1923.27
- NovaGROW6g R3846.78



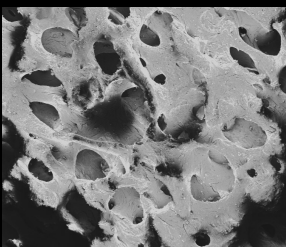
NovaMEM MEMBRANES



- 15x20 mm R1470.80
- 20x30 mm R1890.20
- 25x35 mm R3065.50
- 40x60 mm R7130.50



ROTATOR CUFF PATCH

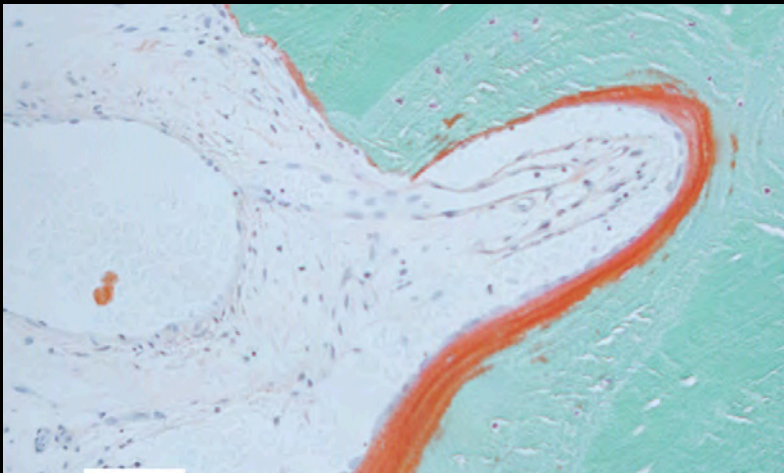


- NOVATENDX R3016.00



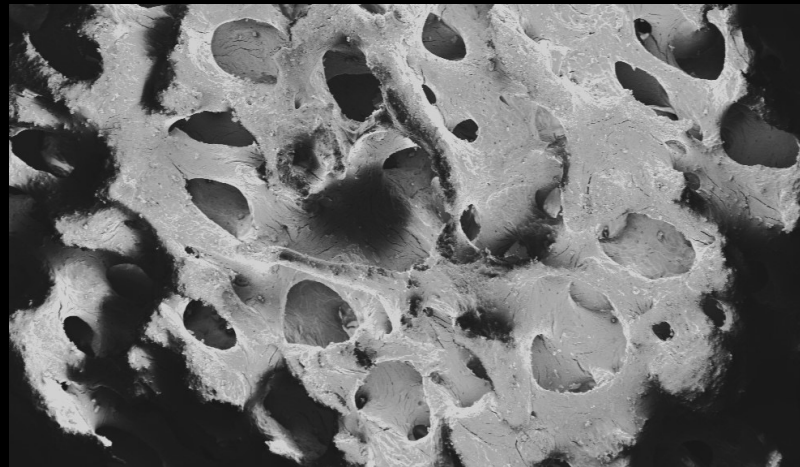
NovaDBMX FEATURES

NovaDBMX consists of type 1 atelopeptide depleted demineralized bone matrix with standardized levels of BMP-2 to ensure a predictable and reliable clinical result. Designed for ease of use by surgeons.



The syringe comes pre-filled and is supplied ready to use fitting seamlessly into existing theater workflows and saving the time required for a harvesting procedure. NovaDBMX can be used as extender with autograft.

The device is available in 1, 2 and 5 cc variations according to surgical requirement. They are terminally sterilized via gamma irradiation and have a validated shelf life of 18 months. The device requires no cold storage.





NOVATEND
LEADERS IN TISSUE ENGINEERING

INDICATIONS

NovaDBMX is indicated for a wide range of clinical applications, including:

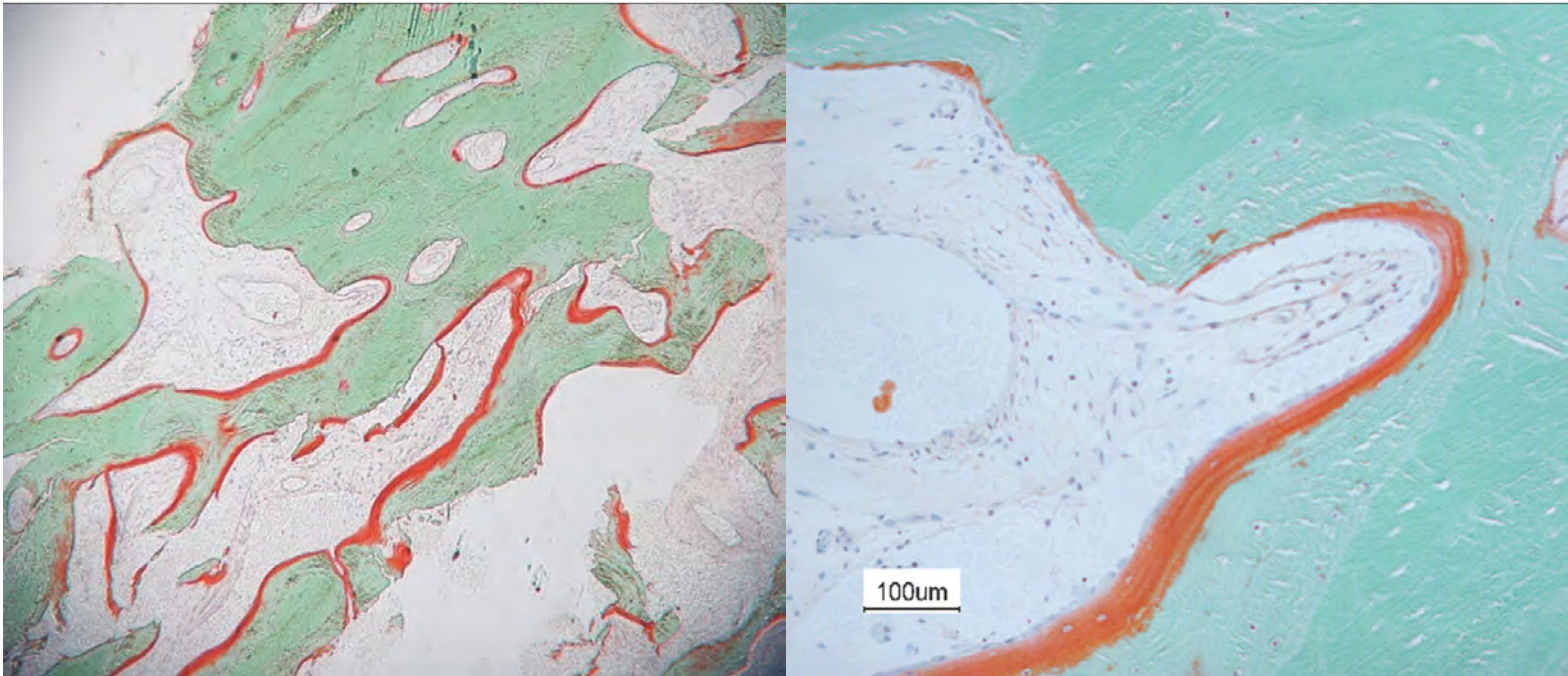
- Filling bone voids and defects in orthopedic surgeries.
- Augmentation in spinal fusion procedures.
- Support in periodontal and maxillofacial reconstructive surgeries.
- Enhancing bone healing in traumatic fractures.

ADVANTAGES

1. **Enhanced Osteogenesis:** Reliable stimulation of new bone growth due to optimized BMP-2 levels.
2. **Versatile Application:** Injectable form allows use in minimally invasive and open surgeries. Acts as haemostat.
3. **Reduced Operating Time:** Prepackaged and ready for immediate use, minimizing surgical preparation.
4. **Ethical and Sustainable:** Uses porcine-derived DBM, reducing reliance on human cadaveric bone while maintaining superior performance.

OUR MISSION STATEMENT

Novatend products provide a solution to the unavailability of imported devices as their high price cannot be reimbursed by most medical aid schemes. Our devices are fully approved and reimbursed by major medical aids. Our membranes and grafting products have been used in South African private hospitals for over a decade with an excellent safety profile. All our products are produced in a state-of-the-art ISO 13485 accredited cleanroom facility and terminally sterilized. Each batch undergoes 13 advanced molecular tests before release to market. Products require no cold storage.



HE Stain of Biopsy showing new bone formation at 20x and 100x. Light Green - New Bone, Red- Osteoid, Dark Green - Implanted DBM

For orders contact sales@novatend.com.

SAHPRA:00003409MD
UKAS:00025955



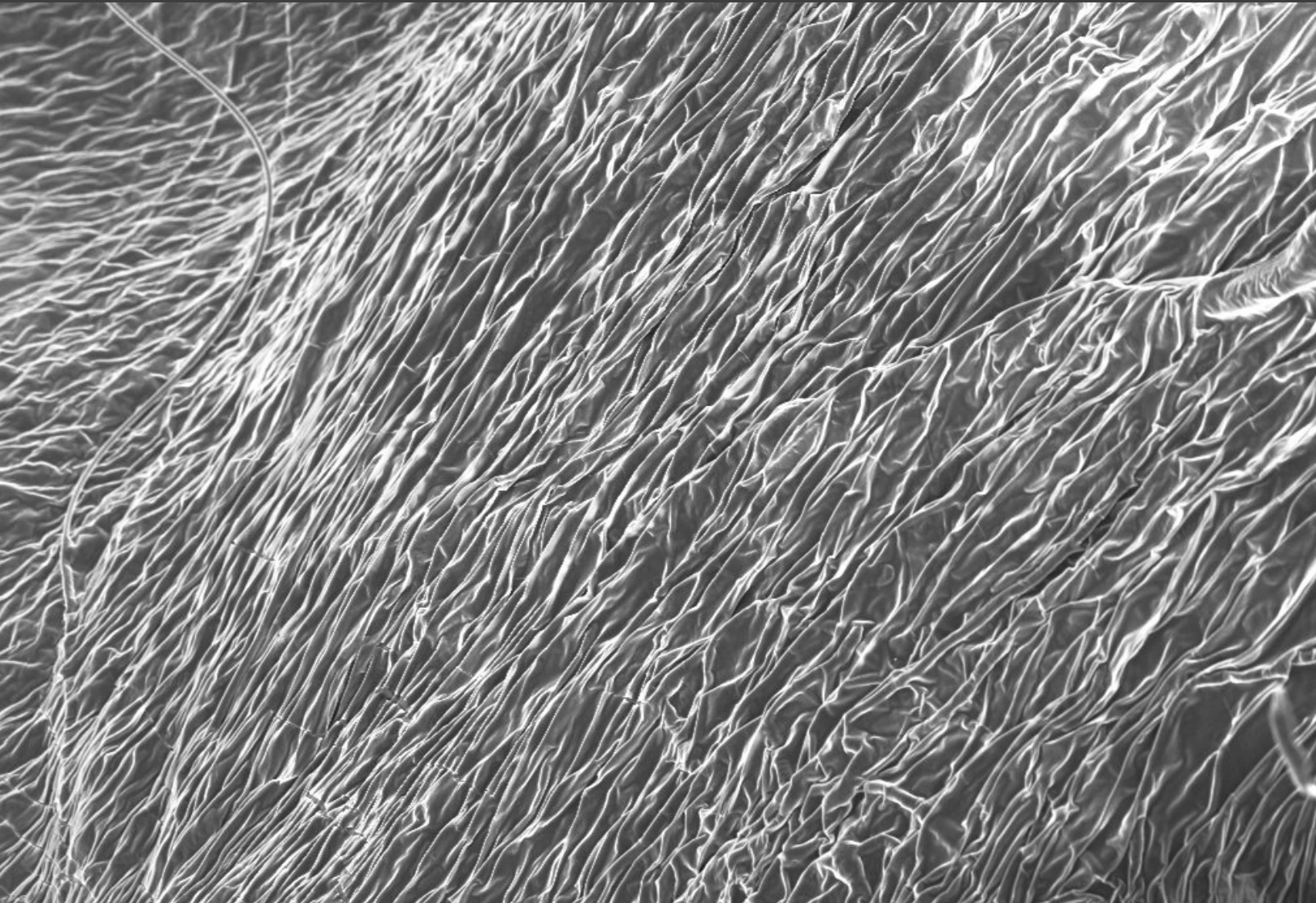
All Rights Reserved © Novatend 2025

NOVATEND (Pty) Ltd
2022/686389/07
The Innovation Hub,
Persequor. 0087.
sales@novatend.com
+27825662194



NOVATEND

LEADERS IN TISSUE ENGINEERING



Laminar Collagen Fibrils as viewed through a Zeiss SEM at 8300 x (C) Novatend 2024



NOVATEND

LEADERS IN TISSUE ENGINEERING